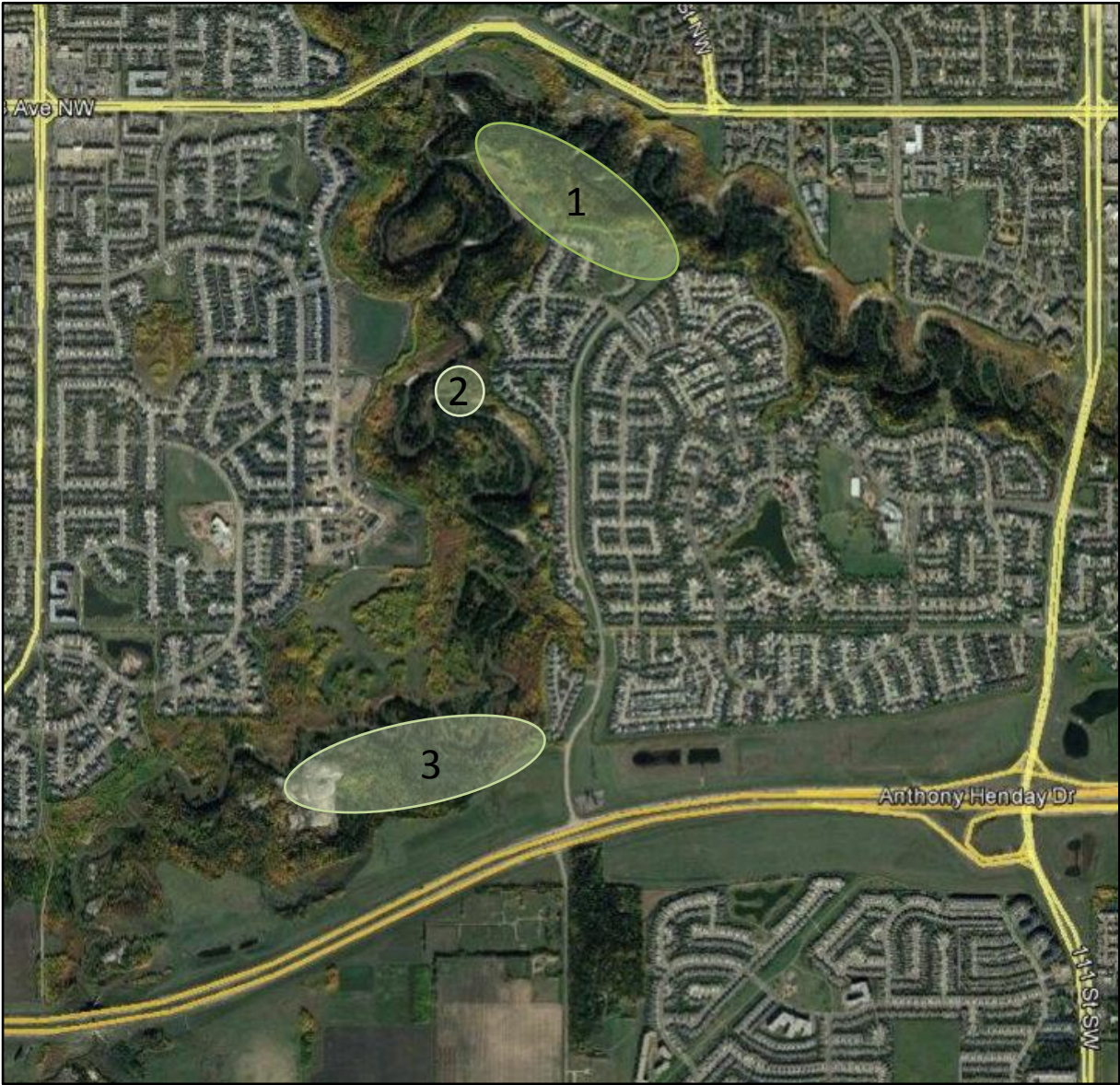


Blackmud_Whitemud Triangle Field Tour



- ### Tour Stop Locations
1. Twin Brooks District & Nature Park – 45 min.
 2. North Mactaggart Sanctuary – 30 min.
 3. South Mactaggart Sanctuary – 60 min.

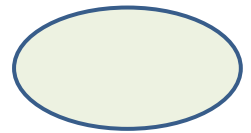
Stop #1 – Twin Brooks District & Nature Park

- Top of bank views of lower Blackmud Ck. and Whitemud Ck. ravines.
- Wildlife movement between ravines.
- Canyon terrain and critical winter deer and moose habitat in lower Blackmud Ck. Ravine.
- Views of extensive, intact wildlife habitat in ravines providing security and connectivity.
- Winter recreational use on frozen Whitemud Creek.
- Challenges for a connecting access trail from 23 Ave.
- Strengthening natural connections between ravines and tablelands.

Critical Deer & Moose Winter Habitat/Movements



Critical habitat with open southwest slopes and shrubby browse adjacent to dense conifer forest thermal cover.



Stop #2 – North Mactaggart Sanctuary

- Opportunity for loop trail to old Sandy Mactaggart bldg. site with graded access from top-of-bank trail in Twin Brooks.
- Views of Mactaggart Sanctuary and Whitemud Creek.
- High quality habitat and viewing opportunities for deer, moose, beaver, coyote, birds of prey (e.g. great horned owl, northern goshawk), spawning fish (e.g. white sucker), and a variety of other migrant and resident bird species.
- Evidence of human influence, including non-native & invasive plants, such as tansy, caragana and horseradish.
- Reclamation of old bldg. site needed for safety.

Sandy Mactaggart Old Building Site



Stop #3 – South Mactaggart Sanctuary

- 119th St. signed access point, with small parking area and graded trail to Mactaggart Sanctuary - potential for Trail Head with connections to Twin Brooks top-of-bank & 119th St trails.
- Easy walking access to ravine along graded coal-mining trail.
- Access to old coal-mining areas with connecting trails to Anthony Henday Drive.
- Potential for a bridge and connecting trail(s) to top-of-bank trail on west side of Whitemud Ravine.
- High quality wildlife-viewing and nature appreciation opportunities throughout area.
- Early spring dinosaur digs in banks of Whitemud Creek near main trail.

